

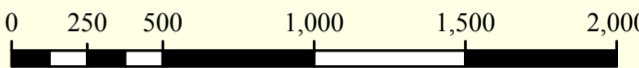
# QTOPO

## TULLY FALLS

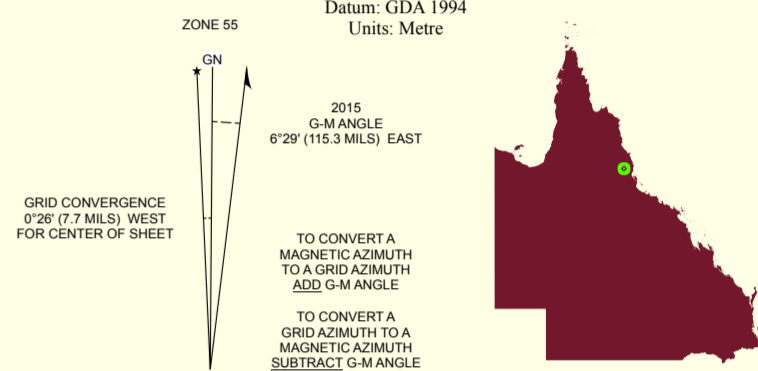
8062-34



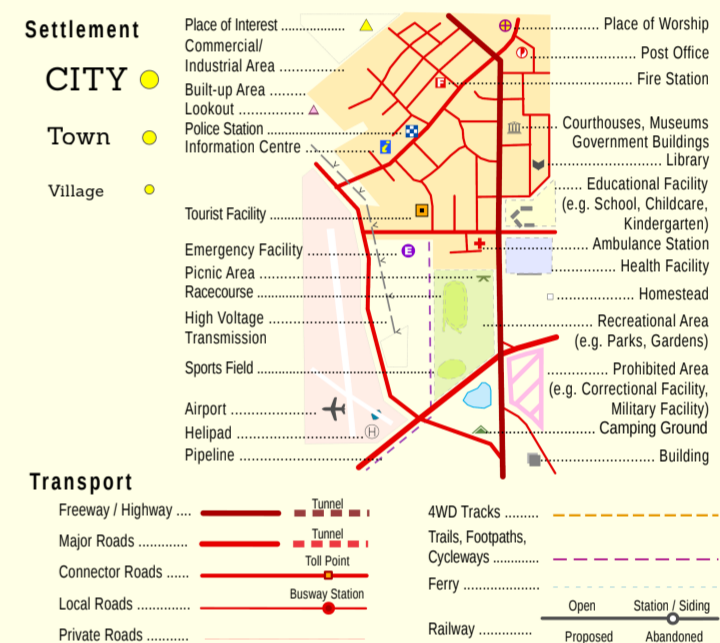
Scale 1:25,000



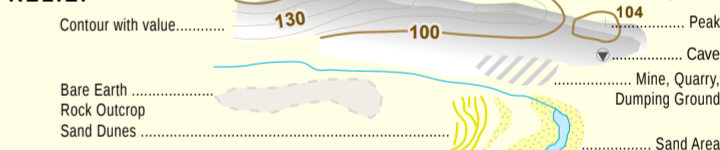
Coordinate System: GDA 1994 MGA Zone 55  
Projection: Transverse Mercator  
Datum: GDA 1994  
Units: Metre



### CULTURAL FEATURES



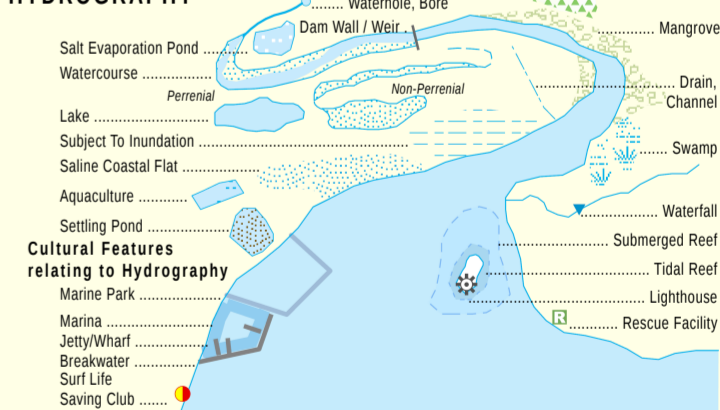
### RELIEF



### VEGETATION



### HYDROGRAPHY



Reliability: QTopo has been compiled from the best information available to Queensland Government. The accuracy and reliability of this data is known to vary across the different scales. It is planned for this information to improve as more accurate data is sourced. Metadata information can be obtained via the QTopo application.  
<http://qtopo.dnrm.qld.gov.au>

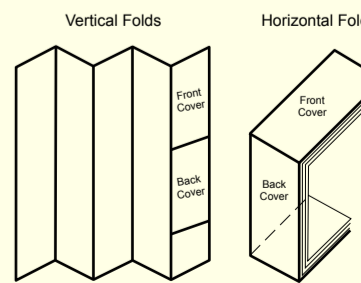
The Queensland Government supports and encourages the dissemination and exchange of its information. The copyright in this publication is licensed under a Creative Commons Attribution 4.0 licence.



For more information on this licence, visit  
<http://creativecommons.org/licenses/by/4.0/>

The information contained herein is subject to change without notice. The Queensland Government shall not be liable for technical or other errors or omissions contained herein. The reader/user accepts all risks and responsibility for losses, damages, costs and other consequences resulting directly or indirectly from using this information.

7962-12 Millstream	8062-43 Mount Koolmoor	8062-42 Kangaroo Gorge Falls
7962-21 Blunder Park	8062-34 Tully Falls	8062-31 Mount Koolmoor
7962-22 Brewarra	8062-33 Tully River	8062-32 Old Culpas



All enquiries:  
[opendata@dnrm.qld.gov.au](mailto:opendata@dnrm.qld.gov.au)  
Department of Natural Resources, Mines and Energy  
GPO Box 2454, BRISBANE QLD 4001

© The State of Queensland 2018.  
© Commonwealth of Australia (Geoscience Australia) 2018.



## Upper Tully Rapid map

For use with 'Avenza' app for mobile phone navigation in airplane mode

